



# MONONEEL ENGINEERING PRIVATE LIMITED

PRODUCT CATALOG



## Introduction

Founded in 2013, Mononeel Engineering Private Limited is a technology driven company managed by experienced professionals. We are rooted in expertise of manufacture and application of spray nozzles and other accessories. With our expertise in manufacture and extensive domain knowledge, we cater to various industries including Automobiles, Steel, Cement, Pharmaceutical, Chemical and Paper.

The aim of our company is customer satisfaction. We ensure products with precision and quality within the stipulated time. We provide a good technical support for our products along with the requisite after sales service. All this is ensured at an affordable price.

Our goal is to be an efficient manufacturing & consulting organization, providing innovative business solutions to our clients. We believe the right way to help ourselves is by helping the customers. And we do our best to achieve that.

### **Regd.Office:**

A/702, Oshodhara Residency, Khadakpada, Kalyan West,  
Thane – 421301, Maharashtra

Tel.No. +91 9167292924 / 8080177775

Email Id:- mononeelengg@gmail.com

## Camlock Filter

MNCC Camlock fitting are ideal solution for fitting spray pipes and manifolds in pre-treatment lines in Paint application for automotive Industries. These Couplings are available with BSP (F) end connections



CAMLOCK FITTING

### Material of Construction

- ✓ GRPP: Glass Fiber reinforce Polypropylene
- ✓ SS: 304 Stainless Steel

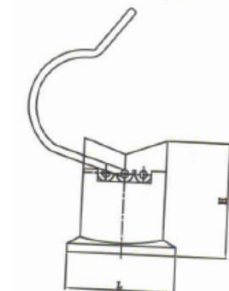
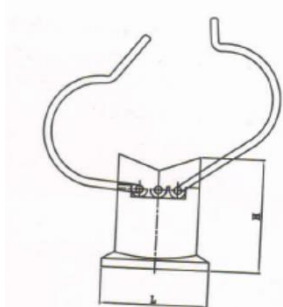
Product Code	Size	Length	Width
MNCC 0025	1"	100	75
MNCC 0032	1 ¼"	100	75
MNCC 0040	1 ½"	115	90
MNCC 0050	2"	115	90

## Pipe Support

MNPS Pipe Support offer an easy and convenient solution for holding the riser pipes in the tunnel of the pre-treatment plants, while making the maintenance operation faster. The spring holders can accommodate both steel as well as plastics pipes, two springs are provided for holding the pipe.



PIPE SUPPORT



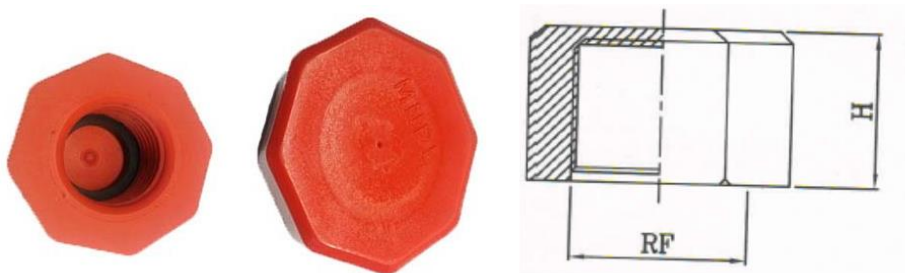
### Material of Construction

- ✓ Body : GRPP - Glass Fiber Reinforced Polypropylene
- ✓ Spring : Stainless Steel (Heat treated)
- ✓ Nut with Bolt : SS

Product Code	Size	Spring Diameter MM	Height MM	Nut with Bolt
MNPS 0025	1"	25	50	M 10/ 50
MNPS 0032	1 ¼"	32	50	M 10/ 50
MNPS 0040	1 ½"	40	50	M 10/ 50
MNPS 0050	2"	50	50	M 10/ 50

## End Cap

MNEC End Cap suited for closing the riser pipes and manifolds in the surface treatment plants. These are molded design in reinforced Polypropylene material.



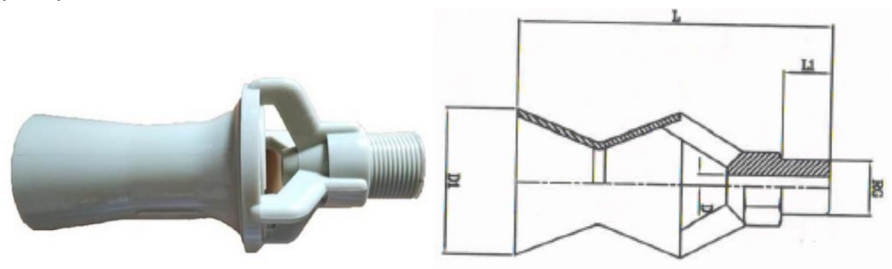
### Material of Construction

✓ Body : GRPP - Glass Fiber Reinforced Polypropylene

Product Code	Size	Height MM
MNEC 0025	1"	30
MNEC 0032	1 ¼"	30
MNEC 0040	1 ½"	30

# Mixing Educators

MNME Mixing Educator is a device which mixes two liquids of different flow rates giving a solution of desired flow rate. Educators are made using a venturi design. It enables small pumps to circulate large volumes of tank solution. When pumping is used for solution agitation, the use of an educator will circulate four to five gallons of solution in the tank for every one gallon you pump



## Material of Construction

- ✓ GRPP - Glass Fiber Reinforced Polypropylene
- ✓ SS – 304 / 316 Stainless Steel

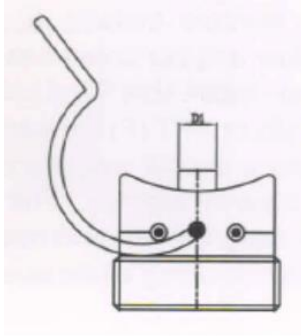
Product Code	End Connection	D	D1	L	L1	WS					
							1.00	2.00	3.00	4.00	5.00
MNME 2016	3/8"	4.4	45	98	15	22	12	16	20	23	26
MNME 2024	3/8"	5.4	45	98	15	22	17	24	30	35	39
MNME 2033	3/8"	6.4	45	98	15	22	23	33	40	46	52
MNME 2041	3/8"	7.1	45	98	15	22	29	41	50	58	65

MNME 2049	3/4"	7.8	60	132	20	30	35	49	60	69	77
MNME 2057	3/4"	8.4	60	132	20	30	40	57	70	81	90
MNME 2065	3/4"	8.8	60	132	20	30	46	65	79	91	102
MNME 2088	3/4"	9.8	60	132	20	30	62	88	108	125	140
MNME 2097	3/4"	11	60	132	20	30	68	97	119	137	153
MNME 2113	3/4"	11.9	60	132	20	30	80	113	138	159	178



## Swivel Pipe Clamps – Spring Type

MNSC Pipe Clamps are easy and efficient method for fitting the nozzles in paint shop applications. These clamps use the retaining caps, ball-joint and O-ring. The profiles spring holder allows quick and easy fitment of the clamp on to the pipe, without using any tools.



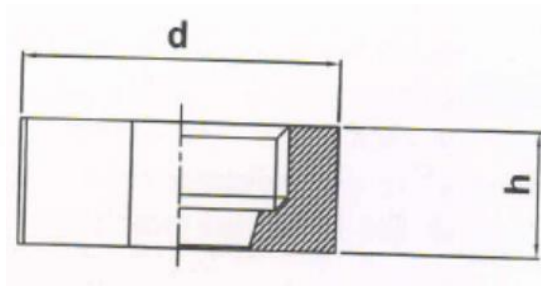
### Material of Construction

- ✓ Body : GRPP - Glass Fiber Reinforced Polypropylene
- ✓ Spring : Stainless Steel (SS)

Product Code	Size	Outside Dia MM
MNSC 0025	1"	33.4
MNSC 0032	1 ¼"	42.2
MNSC 0040	1 ½"	48.0

## Cap Nut

MNCN Cap Nuts are suitable for the MNSC swivel pipe clamps and can be easily assembled by hand, without the use of any tools.



### Material of Construction

✓ Body : GRPP - Glass Fiber Reinforced Polypropylene

Product Code	Connection Size	d*	h*
MNCN 0125	1.25"	59	22

# Ball-Joint for Swivel Pipe Clamp

MNBJ series threaded balls accepts metallic and non-metallic nozzles. These ball joints allow angular spray orientation from 25 degree to 40 degree depending on the nozzle size fitted in it. These are available with 1/4" & 3/8" BSP (F) or NPT (F) connections.



MNBJQ quick-fit ball joints have the same overall size and designed to accept the Mononeel Quick-fit nozzles.

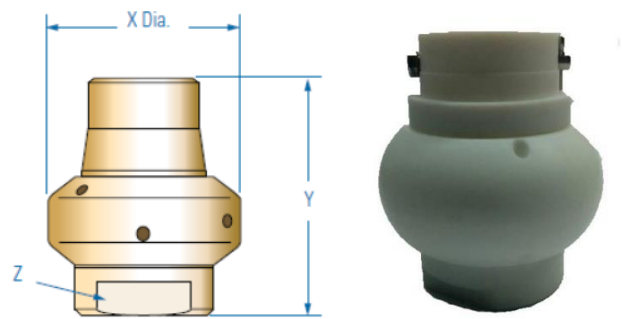
## Material of Construction

- ✓ Body : GRPP - Glass Fiber Reinforced Polypropylene

Product Code BSP (F)	Product Code NPT (F)	Connection Size
MNBJ A014	MNBJ B014	1/4" (F)
MNBJ A038	MNBJ B038	3/8" (F)
MNBJ Q100		Quick-Fit

# Tank Cleaning Nozzle - Reaction Drive

MNTW Nozzles are specially designed for applications where chemical and strong acids are to be used, or when contamination to the product being handled is to be excluded, and therefore entirely made of PTFE (Food Grade).



Their rotary motion is derived from the reaction forces of their water jets, which are arranged in such a way that the inner tank surface is thoroughly covered and cleaned. The simple design, a two-piece construction, assures for long, maintenance free service. One Hastelloy C pin is used for locking the nozzles with supply pipeline.

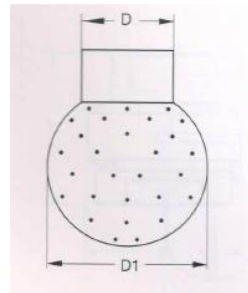
Material of Construction :

✓ PTFE

Model No	Size (End Connection)	Flow Value at Different Pressure (LPM Bar)				Dimensions		
		2	3	5	7	X	Y	Z
MNTW 3120	3/4"	105	120	176	214	60	70	40
MNTW 3198	1" / 1 1/4"	158	198	274	322	74	84	40

## Tank Cleaning Nozzle - Fixed Drive

MNTW are fixed spray Nozzle simple, fast and efficient for cleaning inside of small tanks where a simple rising action is required. The simple design allows from the head easily cleaned after being operated, which make it possible to leave the heads ready for use. Because of the relatively high washing fluid flow rate, they are usually operated at low pressure and can achieve low impact action on the tank wall.



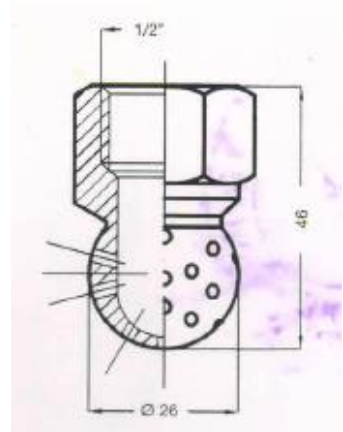
Material of Construction :

- ✓ Nozzle – SS 316L Stainless Steel
- ✓ Connection – Female BSP thread Pipe clip

Model No.	D	D1	Flow values at different Pressure ( LPM Bar)			WR (m)
			1	1.5	2	
MNTW 2044	¼"	28	31	38	44	1,0
MNTW 2127	½"	50	90	110	127	1,6
MNTW2312	¾"	65	221	271	312	1,3
MNTW2704	1" ¼	90	498	610	704	1,8

## Tank Cleaning Nozzle - Fixed Drive

MNTW are fixed head very compact device nozzle design for application like pipe washing or where only tight space is available. The thick walls of this devices which is machined form a stainless steel rod, make it good choice where washing process needs to be performed at high pressure and fast erosion should be avoided.



Material of Construction :

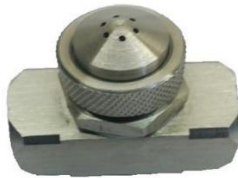
✓ Nozzle – SS 313 Stainless Steel, SS 316L Stainless Steel

Model No.	E	Capacity at different Pressure (LPM Bar)			
		2	3	4	5
MNTW3220	0,8	11,9	22,0	25,4	28,4
MNTW3343	1,0	28,0	34,3	39,0	44,2
MNTW3700	1,5	57,0	70,0	80,9	90,3
MNTW3110	2,0	90,0	110	121	142

## Different Types of Nozzles



HIGH IMPACT NOZZLE



AIR ATOMIZING NOZZLE



SPIRAL SPRAY NOZZLE



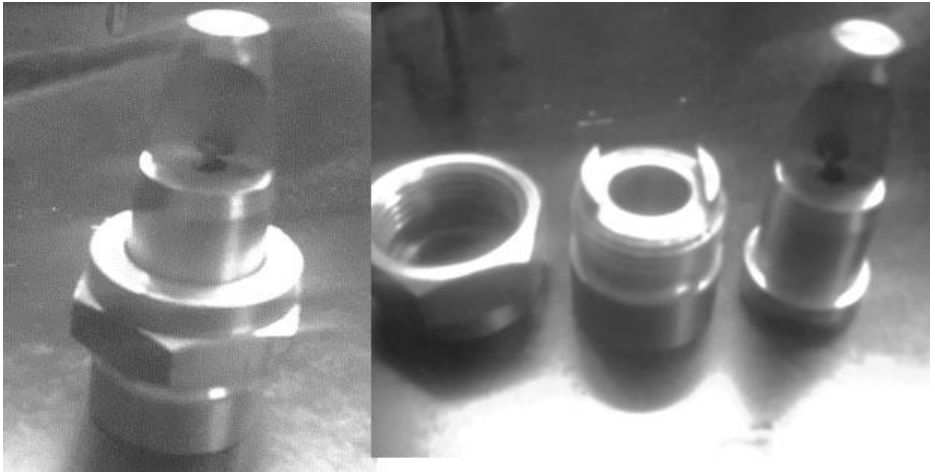
FLAT JET NOZZLES



HOLLOW CONE  
SPRAY NOZZLE



FULL CONE  
SPRAY NOZZLE



**DOVETALE TYPE HIGH IMPACT NOZZLES**



**QUICK RELEASE COUPLING**



**DISK TYPE SHOWER NOZZLE**



**STRAIGHT JET NOZZLE**



# Different Types of PTFE Products

## 1. Stirrer Bellow



STIRRER BELLOW

### Available Standard Sizes:

5/8", 1", 1.5", 2", 3", 4", 6", 8", 9", 10", 12"

## 2. Ball Joint Bellow



BALL JOINT BELLOW

### Available Standard Sizes:

5/8", 1", 1.5", 2", 3", 4", 6", 8", 9", 10", 12" , 18"

### 3. Ball Joint Bellow



BALL JOINT BELLOW

#### **Available Standard Sizes:**

5/8", 1", 1.5", 2", 3", 4", 6", 8", 9", 10", 12"

### 4. Valve Bellow



VALVE BELLOW

#### **Available Standard Sizes:**

5/8", 1", 1.5", 2"

## 5. Envelope Gasket



ENVELOPE GASKET

### **Available Standard Sizes:**

5/8", 1", 1.5", 2", 3", 4", 6", 8", 9", 10", 12", 24"

## 6. Sight Glass



SIGHT GLASS

### **Available Standard Sizes:**

5/8", 3/4", 1", 1.5", 2", 2.5", 3", 4", 6"

## 7. Line Bellow



LINE BELLOW

### Available Standard Sizes

5/8", 1", 1.5", 2", 3", 4", 6", 8", 9", 10", 12"

## 8. Mercury Seals



MERCURY SEALS

### Available Standard Sizes

B-14, B-19, B-24, B-29, B-34, B-45, B-70

## 9. Crescent Rings



CRESCENT RINGS

### **Available Standard Sizes**

5/8", 1", 1.5", 2", 3", 4", 6", 8", 9", 10", 12" , 18"

## Filter Element

MEPL make filter element suitable for different type of duplex basket filter for cleaning, cooling application for cement plant, steel plant and sponge iron plants



## Sprinkler

MNPS Pipe Support offer an easy and convenient solution for holding the riser pipes in the tunnel of the pre-treatment plants, while making the maintenance operation faster. The spring holders can accommodate both steel as well as plastics pipes, two springs are provided for holding the pipe.



### Technical Specification

- ✓ Trajectory Angle: 25 degrees
- ✓ 2" Female pipe connection.
- ✓ Pressure: 2 - 6 Bars.
- ✓ Weight: 3700 Gms.
- ✓ Flow rate: 18.7 - 41.2 m<sup>3</sup>/h (312 - 687 LPM).

Main Nozzle Dia (mm)	Spreader Nozzle Dia (mm)	Pressure at Sprinkler KPA	Casting Radius M	Discharge	
				M3/hr	LPM
16.0	8.0 x 5.0	200	27	18.7	312
16.0	8.0 x 5.0	300	31	22.4	374
16.0	8.0 x 5.0	400	34	25.7	429
16.0	8.0 x 5.0	500	37	28.5	476
18.0	8.0 x 5.0	200	28	22.3	373
18.0	8.0 x 5.0	300	33	27.8	464
18.0	8.0 x 5.0	400	36	32.1	536
18.0	8.0 x 5.0	500	40	35.4	591
20.0	8.0 x 5.0	200	29	26.4	441
20.0	8.0 x 5.0	300	34	33.0	550
20.0	8.0 x 5.0	400	38	38.1	636
20.0	8.0 x 5.0	500	43	41.2	687